

MINISTRY OF HEALTH SEYCHELLES

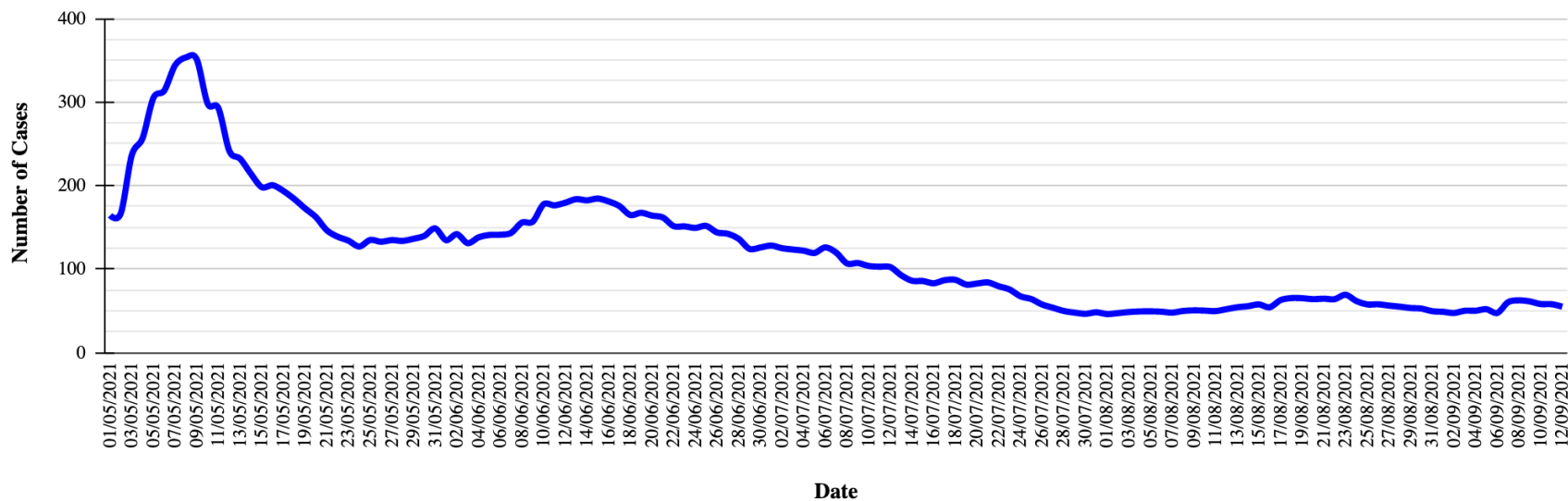
PRESS RELEASE

MONDAY 13TH SEPTEMBER 2021

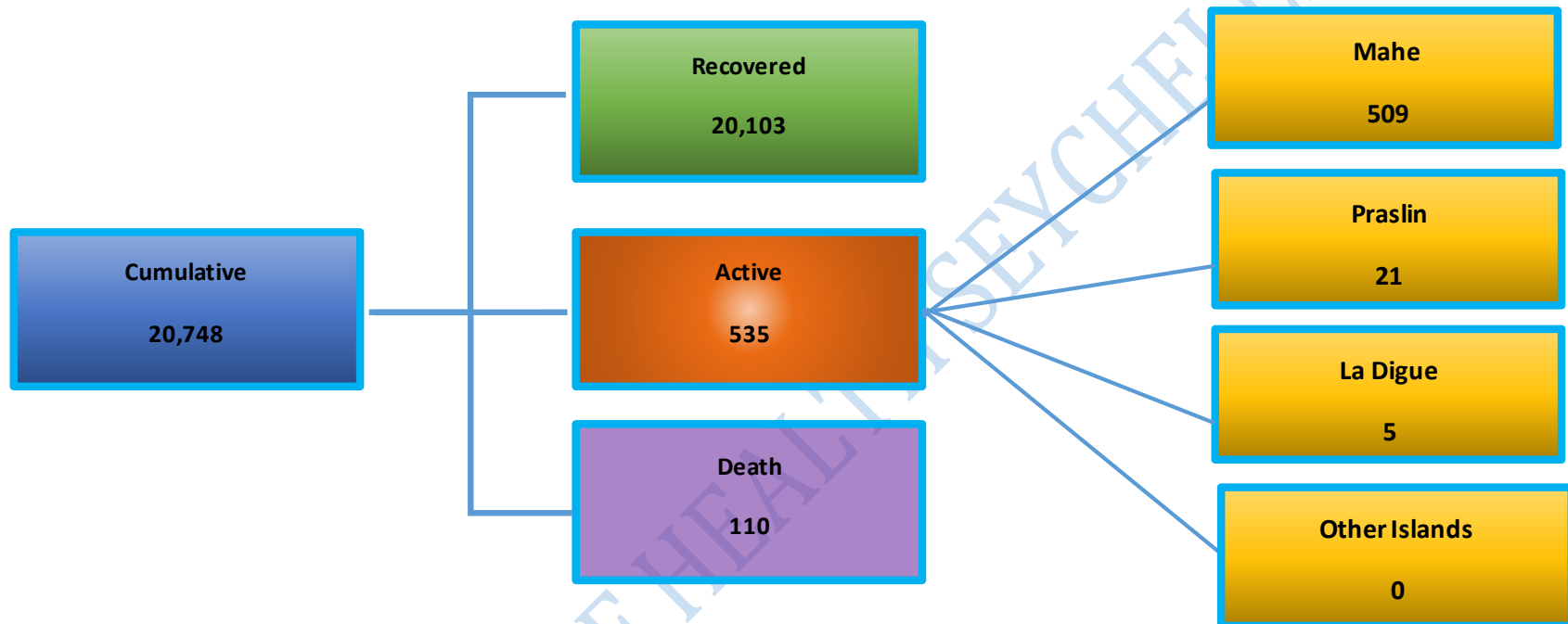
Update on COVID-19 cases

The graph below shows the 7 day moving average from 1st May 2021 to 12th September 2021. Community transmission persists and all districts continue to report cases. The 7 day moving average remains around 50.

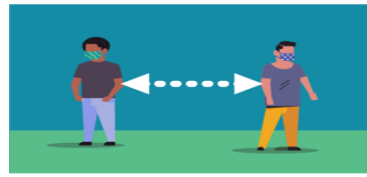
Moving Average (7 days) of Daily COVID19 Cases, Seychelles 2021



The chart below shows the total number of cases ever reported, the number recovered, active cases and death. The distribution of active cases for Mahe, Praslin, La Digue and other islands



The Public Health Authority is urging the public to remain extra vigilant and to strictly adhere to public health measures such as proper wearing of masks, physical distancing, amongst others to prevent a surge in new number of cases.



Mask up, wash hands, Social distance, vaccinate, stay home to protect yourself and others from the virus